

Hampshire Water Transfer and Water Recycling Project Environmental Statement - Figure 16.3 Mineral Safeguarded Assessment: Borehole logs

VOLUME NUMBER: 6

PLANNING INSPECTORATE SCHEME NUMBER: WA010002

APPLICATION DOCUMENT REFERENCE: 6.3

APFP REGULATION: 5(2)(a)

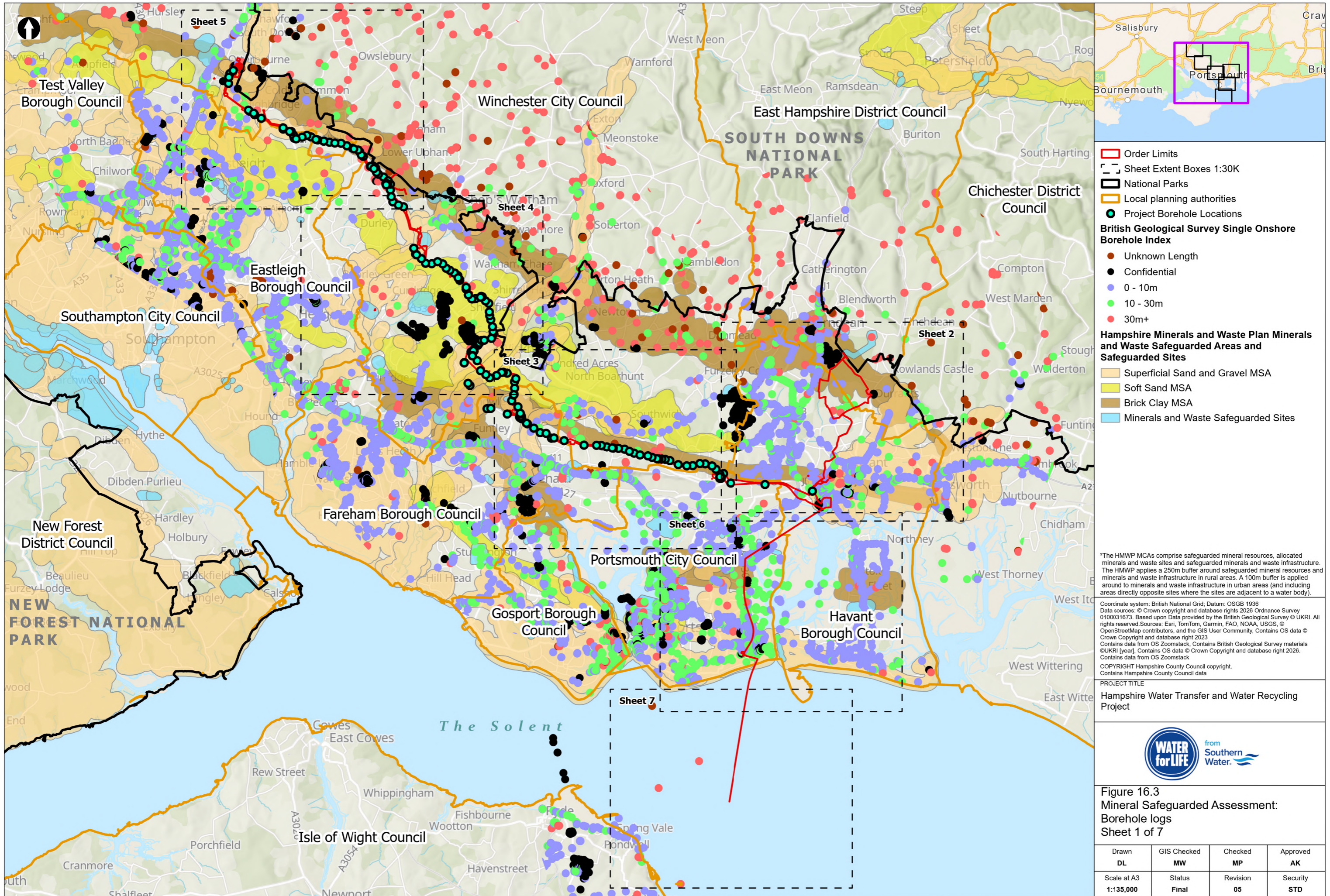
May 2026

Version 0



from
**Southern
Water** 

The Southern Water logo consists of three stylized, wavy blue lines of varying lengths, positioned to the right of the text 'Southern Water'.



- Order Limits
 - Sheet Extent Boxes 1:30K
 - National Parks
 - Local planning authorities
 - Project Borehole Locations
- British Geological Survey Single Onshore Borehole Index**
- Unknown Length
 - Confidential
 - 0 - 10m
 - 10 - 30m
 - 30m+
- Hampshire Minerals and Waste Plan Minerals and Waste Safeguarded Areas and Safeguarded Sites**
- Superficial Sand and Gravel MSA
 - Soft Sand MSA
 - Brick Clay MSA
 - Minerals and Waste Safeguarded Sites

*The HMWP MCAs comprise safeguarded mineral resources, allocated minerals and waste sites and safeguarded minerals and waste infrastructure. The HMWP applies a 250m buffer around safeguarded mineral resources and minerals and waste infrastructure in rural areas. A 100m buffer is applied around to minerals and waste infrastructure in urban areas (and including areas directly opposite sites where the sites are adjacent to a water body).

Coordinate system: British National Grid; Datum: OSGB 1936
 Data sources: © Crown copyright and database rights 2026 Ordnance Survey 0100031673. Based upon Data provided by the British Geological Survey © UKRI. All rights reserved. Sources: Esri, TomTom, Garmin, FAO, NOAA, USGS, © OpenStreetMap contributors, and the GIS User Community, Contains OS data © Crown Copyright and database right 2023
 Contains data from OS Zoomstack, Contains British Geological Survey materials © UKRI [year], Contains OS data © Crown Copyright and database right 2026. Contains data from OS Zoomstack
 COPYRIGHT Hampshire County Council copyright.
 Contains Hampshire County Council data

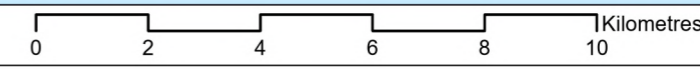
PROJECT TITLE
 Hampshire Water Transfer and Water Recycling Project

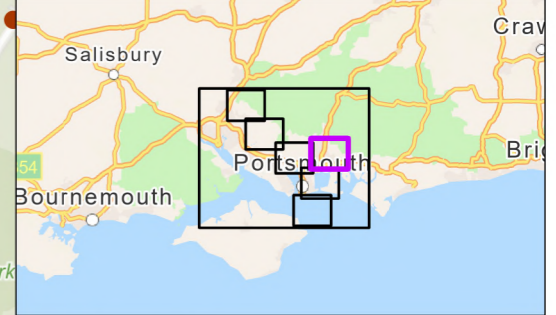
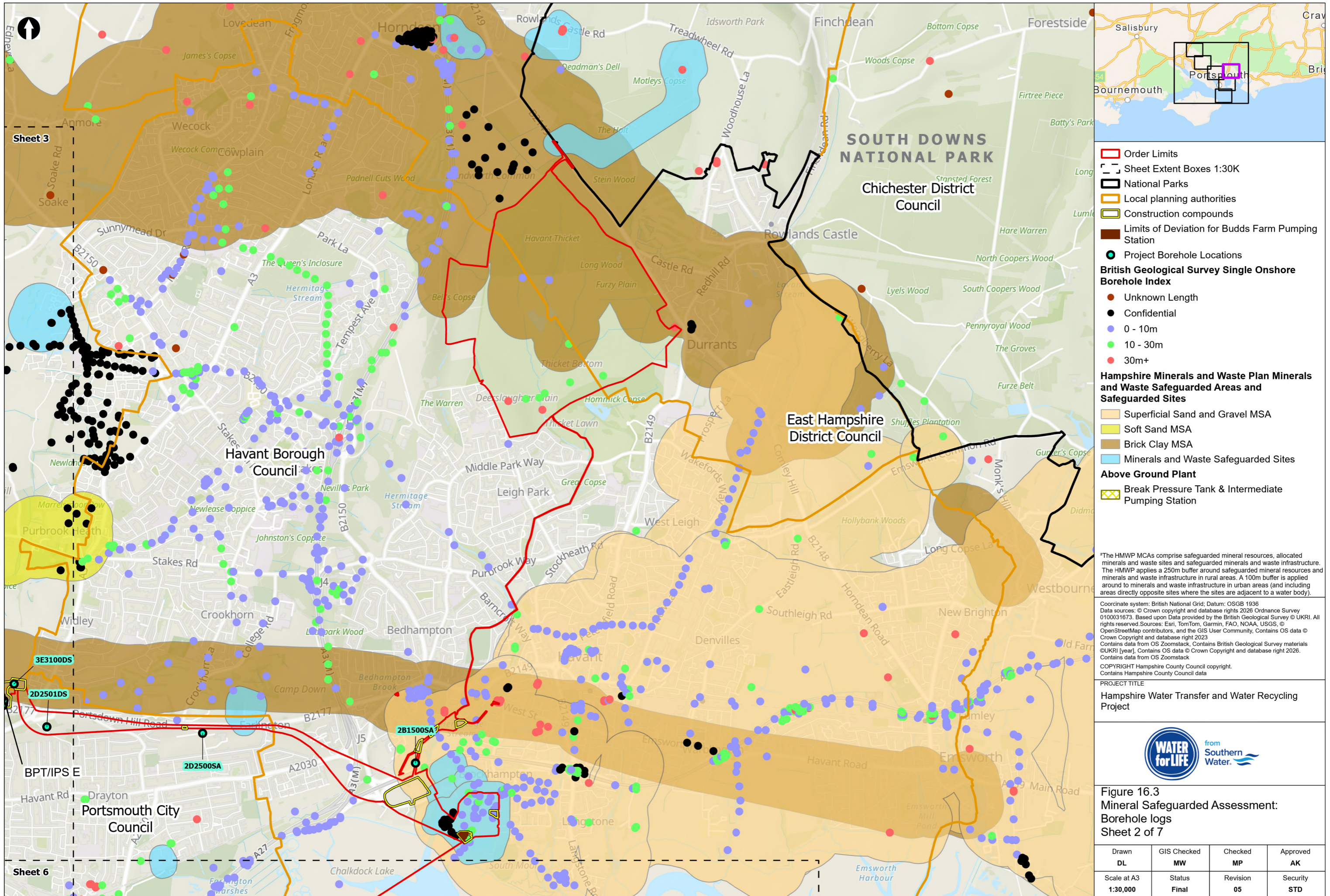


Figure 16.3
 Mineral Safeguarded Assessment:
 Borehole logs
 Sheet 1 of 7

Drawn DL	GIS Checked MW	Checked MP	Approved AK
Scale at A3 1:135,000	Status Final	Revision 05	Security STD

Drawing Number
 PC5223-RHD-ES-ZZ-D-Z-0017





- Order Limits
 - Sheet Extent Boxes 1:30K
 - National Parks
 - Local planning authorities
 - Construction compounds
 - Limits of Deviation for Budds Farm Pumping Station
 - Project Borehole Locations
- British Geological Survey Single Onshore Borehole Index**
- Unknown Length
 - Confidential
 - 0 - 10m
 - 10 - 30m
 - 30m+
- Hampshire Minerals and Waste Plan Minerals and Waste Safeguarded Areas and Safeguarded Sites**
- Superficial Sand and Gravel MSA
 - Soft Sand MSA
 - Brick Clay MSA
 - Minerals and Waste Safeguarded Sites
- Above Ground Plant**
- Break Pressure Tank & Intermediate Pumping Station

*The HMWP MCAs comprise safeguarded mineral resources, allocated minerals and waste sites and safeguarded minerals and waste infrastructure. The HMWP applies a 250m buffer around safeguarded mineral resources and minerals and waste infrastructure in rural areas. A 100m buffer is applied around to minerals and waste infrastructure in urban areas (and including areas directly opposite sites where the sites are adjacent to a water body).

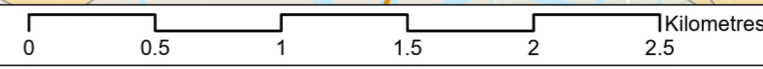
Coordinate system: British National Grid; Datum: OSGB 1936
 Data sources: © Crown copyright and database rights 2026 Ordnance Survey 0100031673. Based on Data provided by the British Geological Survey © UKRI. All rights reserved. Sources: Esri, TomTom, Garmin, FAO, NOAA, USGS, © OpenStreetMap contributors, and the GIS User Community, Contains OS data © Crown Copyright and database right 2023
 Contains data from OS Zoomstack, Contains British Geological Survey materials © UKRI [year], Contains OS data © Crown Copyright and database right 2026. Contains data from OS Zoomstack
 COPYRIGHT Hampshire County Council copyright.
 Contains Hampshire County Council data

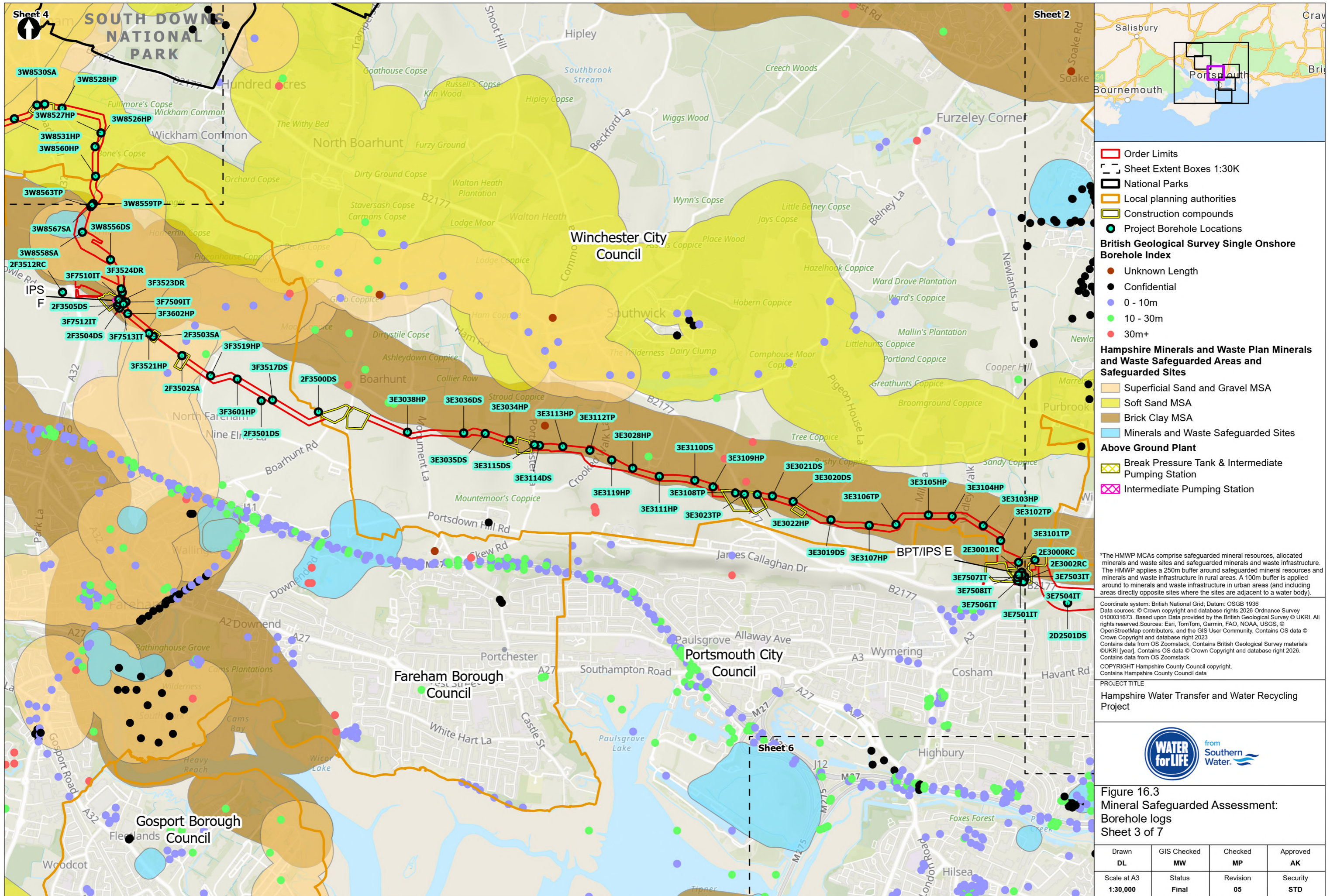
PROJECT TITLE
Hampshire Water Transfer and Water Recycling Project



Figure 16.3
Mineral Safeguarded Assessment:
Borehole logs
 Sheet 2 of 7

Drawn DL	GIS Checked MW	Checked MP	Approved AK
Scale at A3 1:30,000	Status Final	Revision 05	Security STD





- Order Limits
 - Sheet Extent Boxes 1:30K
 - National Parks
 - Local planning authorities
 - Construction compounds
 - Project Borehole Locations
- British Geological Survey Single Onshore Borehole Index**
- Unknown Length
 - Confidential
 - 0 - 10m
 - 10 - 30m
 - 30m+
- Hampshire Minerals and Waste Plan Minerals and Waste Safeguarded Areas and Safeguarded Sites**
- Superficial Sand and Gravel MSA
 - Soft Sand MSA
 - Brick Clay MSA
 - Minerals and Waste Safeguarded Sites
- Above Ground Plant**
- Break Pressure Tank & Intermediate Pumping Station
 - Intermediate Pumping Station

*The HMWP MCAs comprise safeguarded mineral resources, allocated minerals and waste sites and safeguarded minerals and waste infrastructure. The HMWP applies a 250m buffer around safeguarded mineral resources and minerals and waste infrastructure in rural areas. A 100m buffer is applied around to minerals and waste infrastructure in urban areas (and including areas directly opposite sites where the sites are adjacent to a water body).

Coordinate system: British National Grid; Datum: OSGB 1936
 Data sources: © Crown copyright and database rights 2026 Ordnance Survey 0100031673. Based upon Data provided by the British Geological Survey © UKRI. All rights reserved. Sources: Esri, TomTom, Garmin, FAO, NOAA, USGS, © OpenStreetMap contributors, and the GIS User Community, Contains OS data © Crown Copyright and database right 2023
 Contains data from OS Zoomstack, Contains British Geological Survey materials © UKRI [year], Contains OS data © Crown Copyright and database right 2026. Contains data from OS Zoomstack
 COPYRIGHT Hampshire County Council copyright.
 Contains Hampshire County Council data

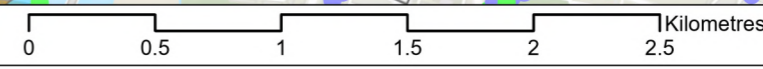
PROJECT TITLE
 Hampshire Water Transfer and Water Recycling Project

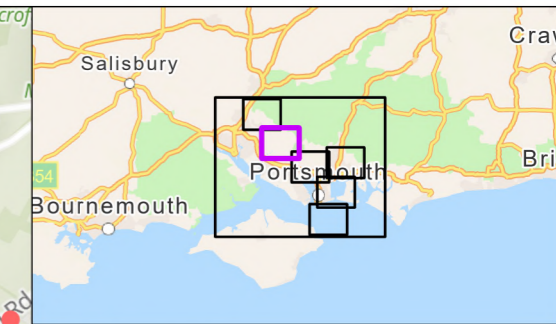
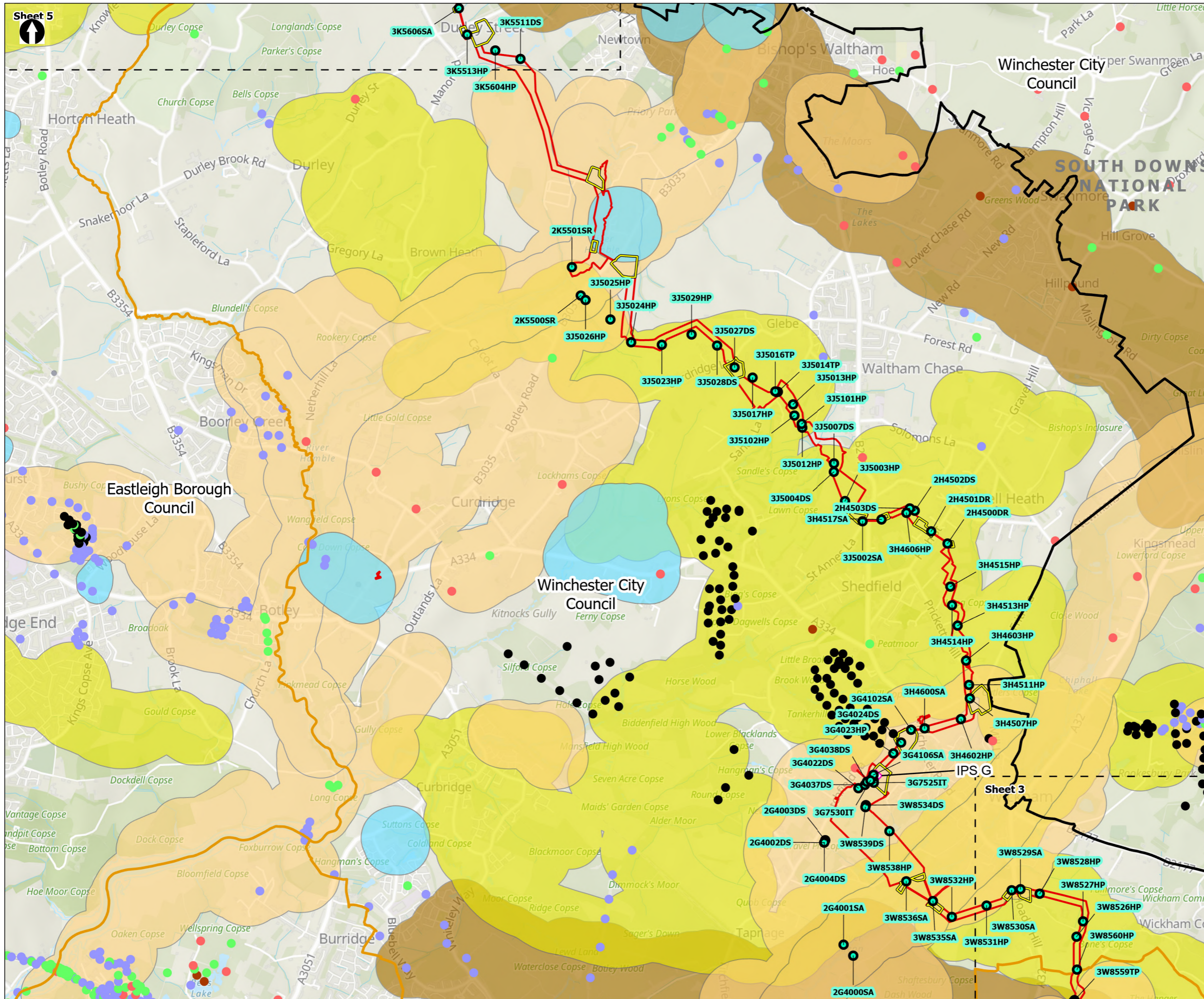


Figure 16.3
 Mineral Safeguarded Assessment:
 Borehole logs
 Sheet 3 of 7

Drawn DL	GIS Checked MW	Checked MP	Approved AK
Scale at A3 1:30,000	Status Final	Revision 05	Security STD

Drawing Number
 PC5223-RHD-ES-ZZ-D-Z-0017





Order Limits
 Sheet Extent Boxes 1:30K
 National Parks
 Local planning authorities
 Construction compounds
 Project Borehole Locations

British Geological Survey Single Onshore Borehole Index

- Unknown Length
- Confidential
- 0 - 10m
- 10 - 30m
- 30m+

Hampshire Minerals and Waste Plan Minerals and Waste Safeguarded Areas and Safeguarded Sites

- Superficial Sand and Gravel MSA
- Soft Sand MSA
- Brick Clay MSA
- Minerals and Waste Safeguarded Sites

Above Ground Plant

- Intermediate Pumping Station

*The HMWP MCAs comprise safeguarded mineral resources, allocated minerals and waste sites and safeguarded minerals and waste infrastructure. The HMWP applies a 250m buffer around safeguarded mineral resources and minerals and waste infrastructure in rural areas. A 100m buffer is applied around to minerals and waste infrastructure in urban areas (and including areas directly opposite sites where the sites are adjacent to a water body).

Coordinate system: British National Grid; Datum: OSGB 1936
 Data sources: © Crown copyright and database rights 2026 Ordnance Survey 0100031673. Based upon Data provided by the British Geological Survey © UKRI. All rights reserved. Sources: Esri, TomTom, Garmin, FAO, NOAA, USGS, © OpenStreetMap contributors, and the GIS User Community, Contains OS data © Crown Copyright and database right 2023
 Contains data from OS Zoomstack, Contains British Geological Survey materials © UKRI [year], Contains OS data © Crown Copyright and database right 2026. Contains data from OS Zoomstack
 COPYRIGHT Hampshire County Council copyright.
 Contains Hampshire County Council data

PROJECT TITLE
 Hampshire Water Transfer and Water Recycling Project

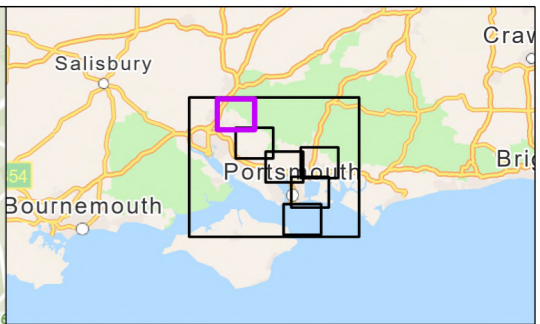
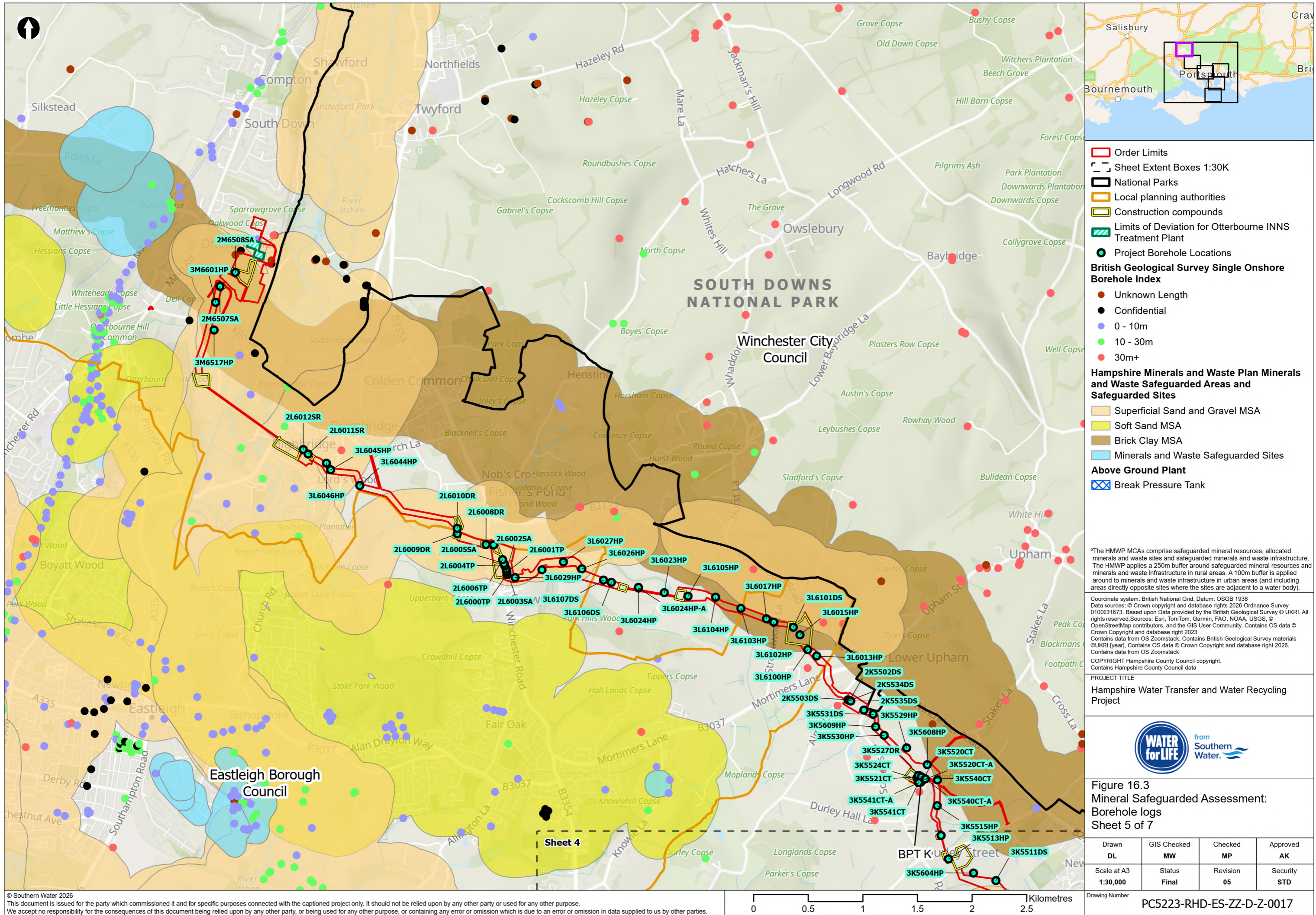


Figure 16.3
 Mineral Safeguarded Assessment:
 Borehole logs
 Sheet 4 of 7

Drawn DL	GIS Checked MW	Checked MP	Approved AK
Scale at A3 1:30,000	Status Final	Revision 05	Security STD

Drawing Number
 PC5223-RHD-ES-ZZ-D-Z-0017





- Order Limits
 - Sheet Extent Boxes 1:30K
 - National Parks
 - Local planning authorities
 - Construction compounds
 - Limits of Deviation for Otterbourne INNS Treatment Plant
 - Project Borehole Locations
- British Geological Survey Single Onshore Borehole Index**
- Unknown Length
 - Confidential
 - 0 - 10m
 - 10 - 30m
 - 30m+
- Hampshire Minerals and Waste Plan Minerals and Waste Safeguarded Areas and Safeguarded Sites**
- Superficial Sand and Gravel MSA
 - Soft Sand MSA
 - Brick Clay MSA
 - Minerals and Waste Safeguarded Sites
- Above Ground Plant**
- X Break Pressure Tank

*The HMWP MCAs comprise safeguarded mineral resources, allocated minerals and waste sites and safeguarded minerals and waste infrastructure. The HMWP applies a 250m buffer around safeguarded mineral resources and minerals and waste infrastructure in rural areas. A 100m buffer is applied around to minerals and waste infrastructure in urban areas (and including areas directly opposite sites where the sites are adjacent to a water body).

Coordinate system: British National Grid; Datum: OSGB 1936
 Data sources: © Crown copyright and database rights 2026 Ordnance Survey 0100031673. Based upon Data provided by the British Geological Survey © UKRI. All rights reserved. Sources: Esri, TomTom, Garmin, FAO, NOAA, USGS, © OpenStreetMap contributors, and the GIS User Community, Contains OS data © Crown Copyright and database right 2023. Contains data from OS Zoomstack, Contains British Geological Survey materials © UKRI [year], Contains OS data © Crown Copyright and database right 2026. Contains data from OS Zoomstack
 COPYRIGHT Hampshire County Council copyright.
 Contains Hampshire County Council data

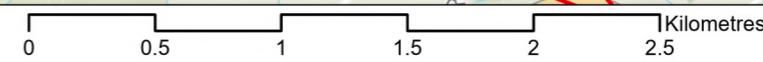
PROJECT TITLE
 Hampshire Water Transfer and Water Recycling Project

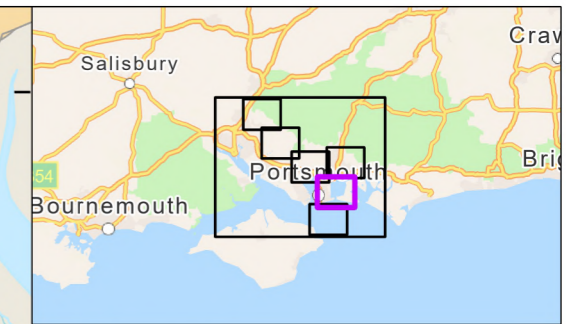
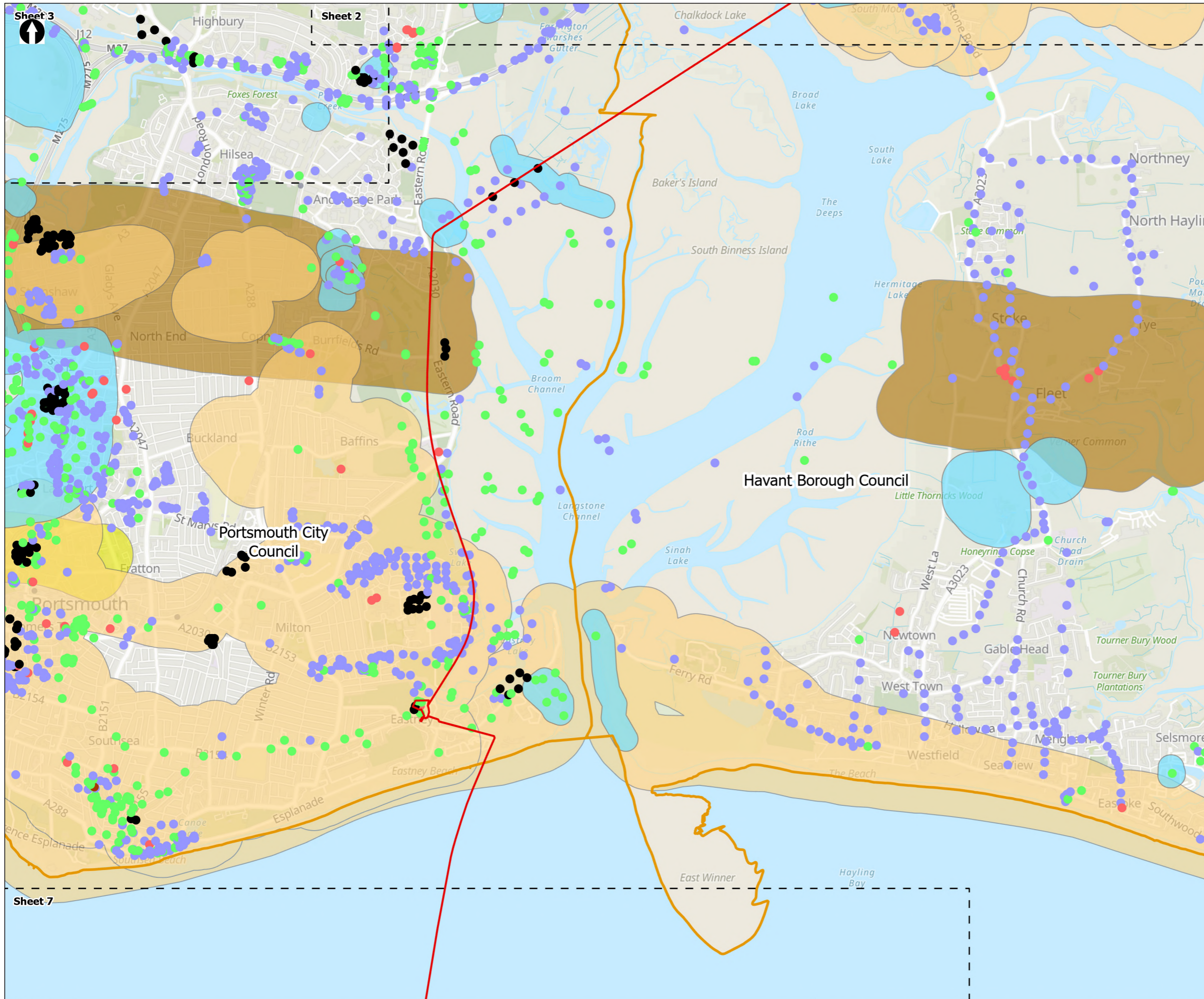


Figure 16.3
 Mineral Safeguarded Assessment:
 Borehole logs
 Sheet 5 of 7

Drawn DL	GIS Checked MW	Checked MP	Approved AK
Scale at A3 1:30,000	Status Final	Revision 05	Security STD

Drawing Number
 PC5223-RHD-ES-ZZ-D-Z-0017





- Order Limits
 - Sheet Extent Boxes 1:30K
 - Local planning authorities
- British Geological Survey Single Onshore Borehole Index**
- Unknown Length
 - Confidential
 - 0 - 10m
 - 10 - 30m
 - 30m+
- Hampshire Minerals and Waste Plan Minerals and Waste Safeguarded Areas and Safeguarded Sites**
- Superficial Sand and Gravel MSA
 - Soft Sand MSA
 - Brick Clay MSA
 - Minerals and Waste Safeguarded Sites

*The HMWP MCAs comprise safeguarded mineral resources, allocated minerals and waste sites and safeguarded minerals and waste infrastructure. The HMWP applies a 250m buffer around safeguarded mineral resources and minerals and waste infrastructure in rural areas. A 100m buffer is applied around to minerals and waste infrastructure in urban areas (and including areas directly opposite sites where the sites are adjacent to a water body).

Coordinate system: British National Grid; Datum: OSGB 1936
 Data sources: © Crown copyright and database rights 2026 Ordnance Survey 0100031673. Based upon Data provided by the British Geological Survey © UKRI. All rights reserved. Sources: Esri, TomTom, Garmin, FAO, NOAA, USGS, © OpenStreetMap contributors, and the GIS User Community, Contains OS data © Crown Copyright and database right 2023. Contains data from OS Zoomstack, Contains British Geological Survey materials © UKRI [year], Contains OS data © Crown Copyright and database right 2026. Contains data from OS Zoomstack
 COPYRIGHT Hampshire County Council copyright. Contains Hampshire County Council data

PROJECT TITLE
 Hampshire Water Transfer and Water Recycling Project

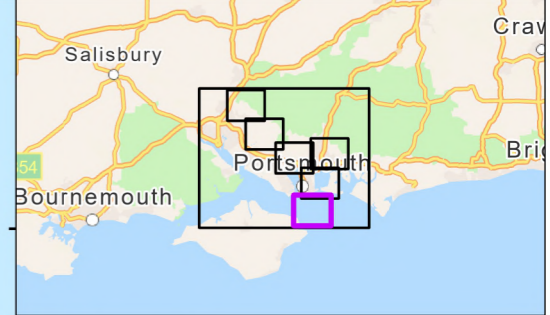
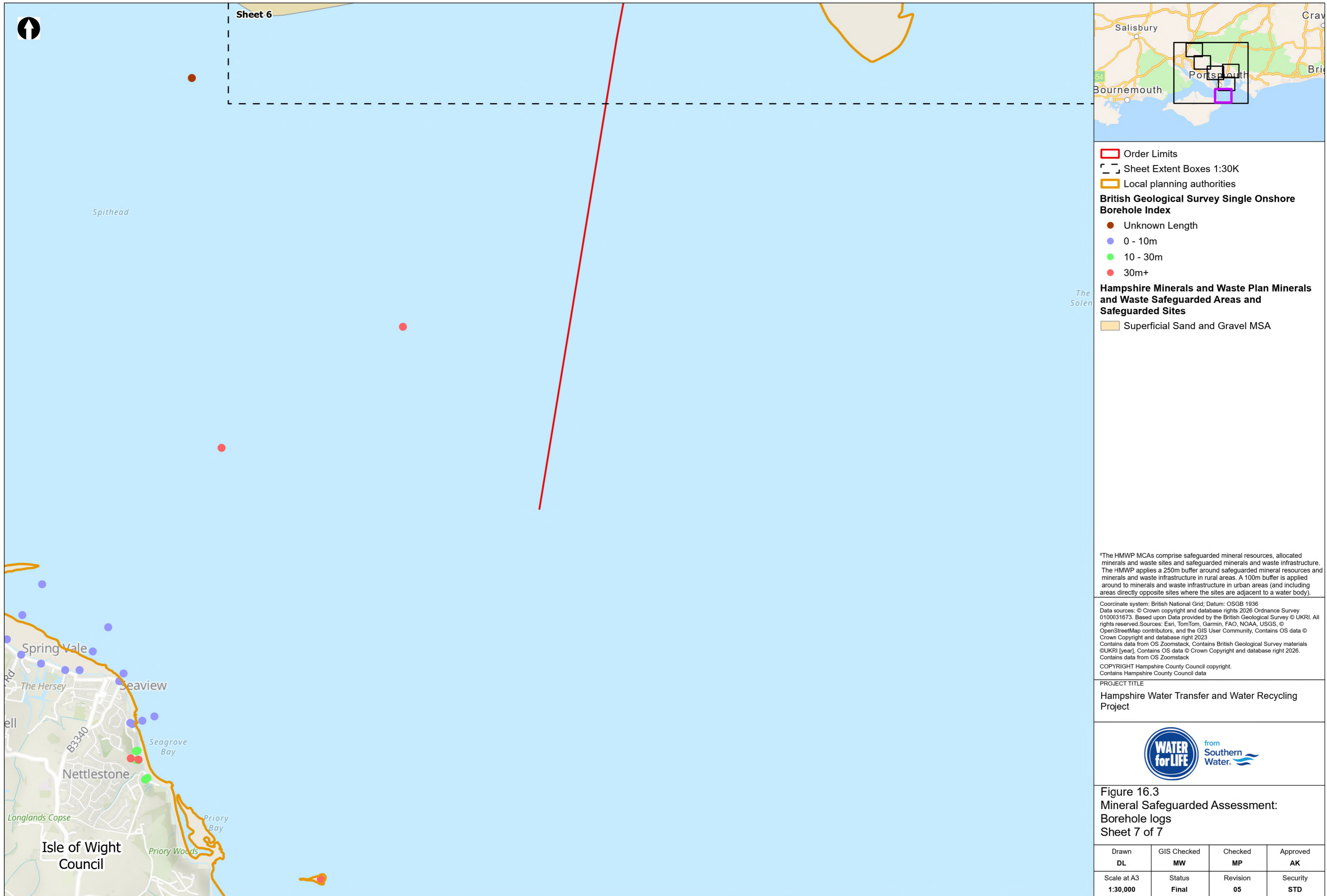


Figure 16.3
 Mineral Safeguarded Assessment:
 Borehole logs
 Sheet 6 of 7

Drawn DL	GIS Checked MW	Checked MP	Approved AK
Scale at A3 1:30,000	Status Final	Revision 05	Security STD

Drawing Number
PC5223-RHD-ES-ZZ-D-Z-0017





- Order Limits
 - Sheet Extent Boxes 1:30K
 - Local planning authorities
- British Geological Survey Single Onshore Borehole Index**
- Unknown Length
 - 0 - 10m
 - 10 - 30m
 - 30m+
- Hampshire Minerals and Waste Plan Minerals and Waste Safeguarded Areas and Safeguarded Sites**
- Superficial Sand and Gravel MSA

*The HMWP MCAs comprise safeguarded mineral resources, allocated minerals and waste sites and safeguarded minerals and waste infrastructure. The HMWP applies a 250m buffer around safeguarded mineral resources and minerals and waste infrastructure in rural areas. A 100m buffer is applied around to minerals and waste infrastructure in urban areas (and including areas directly opposite sites where the sites are adjacent to a water body).

Coordinate system: British National Grid; Datum: OSGB 1936
 Data sources: © Crown copyright and database rights 2026 Ordnance Survey 0100031673. Based upon Data provided by the British Geological Survey © UKRI. All rights reserved. Sources: Esri, TomTom, Garmin, FAO, NOAA, USGS, © OpenStreetMap contributors, and the GIS User Community, Contains OS data © Crown Copyright and database right 2023
 Contains data from OS Zoomstack, Contains British Geological Survey materials ©UKRI [year], Contains OS data © Crown Copyright and database right 2026. Contains data from OS Zoomstack
 COPYRIGHT Hampshire County Council copyright.
 Contains Hampshire County Council data

PROJECT TITLE
Hampshire Water Transfer and Water Recycling Project



Figure 16.3
Mineral Safeguarded Assessment:
Borehole logs
Sheet 7 of 7

Drawn DL	GIS Checked MW	Checked MP	Approved AK
Scale at A3 1:30,000	Status Final	Revision 05	Security STD

